

To Sid Ramin, in friendship

Symphonic Dances from "West Side Story"

Leonard Bernstein

FLUTE 2 - A

Prologue

Allegro moderato (♩. = 128)

Musical score for Flute 2 - A, Prologue, Allegro moderato (♩. = 128). The score consists of ten staves of music. Key markings include *pp*, *mf*, *p cresc.*, *mf*, *mp cresc.*, and *p*. Performance markings include *rit.*, *acc.*, *tr.*, *acc.*, and *rit.*. The score includes measures 8, 15, 25, 34, 40, 47, 53, 61, 68, 74, 80, 88, and 93. Fingerings are indicated for measures 7, 15, 25, 34, 40, 47, 53, 61, 74, 80, 88, and 93. The score includes various articulations such as accents, slurs, and breath marks.

100 *f* 2 2 2 2 2 2 2

107 2 *G.P.* 111 *f* 2 2 2

118 2 *pp subito*

mf 2 2 2 *cresc.* 2 2

127 *cresc.* 2 2 *cresc.* 2 2 *ff* (d. d.)

133 *mf* *ff* *ff* *G.P.* *G.P.*

Scherzando e misterioso 149
(l'istesso tempo)

141 8 *fp.* *f*

154 3 *cresc.* *mf* 162

167 2 *cresc. sempre*

FLUTE 1

5 175 2 179 3

2 189 *crash* 6 195

203 6

209 7 216 3 222

225 G.P. 235 *f marc.*

243 *Furioso*

250

254

258 264 4

ff *ff*

FLUTE 2

268 8 Adagio ($\text{♩} = 72$) 278 Somewhere 8 286 8

294 *tr.* *pp* *3* *3*

300 *pp dolce* *rall. e dim. a tempo* *p* 302 *pp* *tr.*

310 *tr.* *cresc.* *mf < f* *dim. molto* *ppp* *rall.*

315 *Solo* *a tempo* *pp* *ppp*

ppp *mp* *ppp*

329 *Twice as fast* *Andante con moto* *ppp subito* *mf* *poco accel.* 2

335 ($\text{♩} = 96$) 2 *Agitato* ($\text{♩} = 120$) 340 *accel. di più* 2 *accel.* ($\text{♩} = 132$)

347 *Scherzo* *Vivace e leggero* ($\text{♩} = 172$) *p* *pp*

Grazioso 5 356 3 1. 2. *mf*

FLUTE 2

5

2. **361** *pp* (*non cresc.*)

f subito **368** *pp* *cresc.*

376 *f* *marcato e staccato* **382**

391 *ppp* *fl. only cadenz.*

396 *G.P.* *ch. 1-2-3-4* *mp*

400 *Mambo* *Meno Presto* ($\text{♩} = 132$) *ff*

404 *ff*

410 *ff*

420 *ff* **430** *ff*

FLUTE 2

2 *Shout: ff*
Mam - bol

442 9 454

Shout:
Mam - bol *ff* 462 2

466 472 6

480 2 484 3

488 *f* *cresc.* *ff*

496 8 504 2 508 *f* *cresc.*

512 *ff*

520 524 *ff*

ff

FLUTE 2

7

532 *ff* *fff* 536

540 *ff* *dim.* *pp* *molto rall.* $\frac{4}{4}$

545 Cha-Cha
Andantino con grazia ($\text{♩} = 100$)

549 *p*

555

563

569 Meeting Scene
Meno mosso Sempre rubato ($\text{♩} = 72$) *poco rall.*

575 *rit.* *a tempo accel. molto* *2* *2* 581 Cool
Swing Allegretto ($\text{♩} = 160$) *2*

585 Stringendo un poco

589 ($\text{♩} = 88$) *6*

FLUTE 2

595 601 607 Fugue 612 8

6 6 5 8

Si forte.

620

625

632

637

644

649

cresc. sempre

656

661

FLUTE 2

9

666

670

676

681

685

690

694

705

709

ff

sf

dim. molto

OUT TO 7-0

V.S.

713 FLUTE 2

Solo
mf *pp*
 2 713 3 *prec. cue* 724 6

p

730 Rumble
 Molto allegro (♩ = 144)

mf sub. 736 740

pp sub. *mf*

746 753 5 4

759 *gliss.* 763 *cres.* *mf*

769 *p* *mf*

pp *mf* *mf* *mf* *mf* *mf*

776 7 783 5 *cres.* 788 2

pp *mf* *mf* *mf* *mf* *mf*

FLUTE 2

11



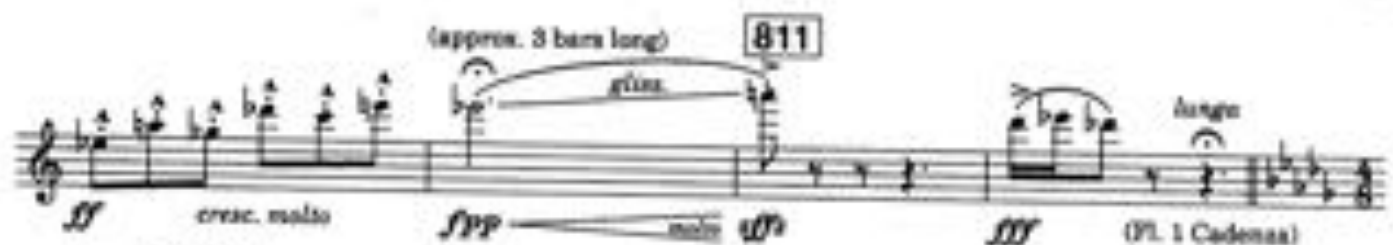
796



801



806



811

(approx. 3 bars long)

813 Finale Adagio (♩ = 80)

819



825

831



837

Meno (♩ = 72)

844



poco rit.

Ancora meno mosso (♩ = 68)

lungo