



1427 HLMS 68
10/25/14

To Sid Ramin, in friendship

Symphonic Dances from "West Side Story"

VIOLONCELLO
A

Leonard Bernstein

-5

To Sid Ramin, in friendship

Symphonic Dances from "West Side Story"

VIOLONCELLO

Leonard Bernstein

Prologue
Allegro moderato (♩ = 128)

8 *pizz.* *p* *subito* *fff*

15 *mp* *p* *pizz.* *arco 2*

25 *arco 2* *Finger snaps:* *p* *pizz.* *mp*

34 *p cresc.*

40 *Joyously* *p subito* *arco 2* *mf* *6*

53 *7* *arco* *arco* *61*

68 *Sim.* *p*

74 *cresc.* *pizz.*

80 *pizz.* *arco non div.*

VIOLONCELLO

3

88 5 93 2 *Picked Str.*

100

107 2 G.P.

111

118 2 *div. a2* *pizz.* *f* *p*

127

133 *arco* *G.P.* *G.P.*

VIOLONCELLO

141 Scherzando e misterioso
(l'istesso tempo)

Solo

149

tutti, div. ad

154

Sonata half arco

1/2 arco half pizz.

162

167

175

179

arco

1/2 arco

V

3

3

3

3

3

3

3

3

3

3

3

ff

arco

189

195

203

(Tutti pizz.)

209

VIOLONCELLO

216

222

G.P.

225

arco

f dim. molto

235

mp cresc.

div. *ff*

non div.

non div.

243

Foriso
unis.

250

254

258

264

aria.
piu.

268

VIOLONCELLO

dir. a2

2

1. solo

arco 2

Adagio ($\text{♩} = 72$)*p*

2

gli altri

arco 2

ppp

278 Somewhere

1. solo

*p**p sempre*

2

(Solo)

By STAND

286

Tutti, dir. a 3

*p**pp*

cresc.

pp

cresc.

pp

cresc.

294

dir. a4

*mp**mp**mp*

VIOLONCELLO

7

300 *div. ad* *rall. e dim.* *a tempo* *V*

310

315 *a tempo* *div. a2* *half arco* *V*

329 *Twice as fast* *Andante con moto*

VIOLONCELLO

335

poco più mosso (♩ = 96) Agitato (♩ = 120)

340

accel. di più

pp > 2 mp cresc. f

(♩ = 132) accel.

1st viol. 3/4 half

p mf mp p dim. VP half

347

Scherzo
Vivace e leggero

(♩ = 172)

Gracioso tutti

p cresc.

356

pizz. marc.

1. 2.

cresc.

361

368

Fuoco 1st viol. 2 x ♩

376

marcato e staccato
(pizz.)

dim. molto

382

ppp

molto

391

marcato

p cresc. G.P.

VIOLONCELLO

396 *arco*

400 Mambo Meno Presto (♩ = 132)

404

410

420

430

442 Shout:
 Mam - bol

454 Shout:
 Mam - bol

462 near frog

10

VIOLONCELLO

466

arco

pizz.

472

484

unis.

488

508

504

unis.

arco

512

This page of a cello score contains measures 466 through 512. The music is written in bass clef with a key signature of one flat. The score is organized into systems, with some systems containing two staves. Key features include:

- Measure 466:** Starts with *arco* and *pizz.* markings.
- Measure 472:** Features a *ff* dynamic marking.
- Measure 480:** Includes a *dix a2* instruction.
- Measure 484:** Starts with *unis.* (unison).
- Measure 488:** Features a *cresc.* (crescendo) marking.
- Measure 496:** Includes a *cresc.* marking.
- Measure 504:** Features a *unis.* marking and an *arco* marking.
- Measure 508:** Includes a *cresc.* marking.
- Measure 512:** Ends with a *cresc.* marking.

VOLONCELLO

11

520

524

532

536

540

ff *dim* *mp* *arco* *half arco* *ppp*

545 Cha-Cha-Çà
Andantino con grazia (♩ = 100)

3 Solo

Sul D

Sul G

Sul G

p *2 pizz.* *3 pizz.*

1948 1947

BERNSTEIN: Symphonic Dances

V.S./

549

Tutti, div. a2
pizz.

555

arco
Sul D

Sul G

Tutti, div. a2
pizz.

div. a2

563

(Tutti)
div. a3
arco

div. a2

Meeting Scene

569

Meno mosso (♩ = 72)

Sempre rubato

575

a tempo $\bar{\bar{\vee}}$ accel. molto

univ.

arco

V

V

V

pizz.

581 Cool Swing
Allegretto (♩ = 160)

VIOLONCELLO

585

13

div. a2
(pizz.)

Stringendo un poco

Two staves of musical notation. The top staff begins with a dynamic of *f* and a *pizz.* marking. The bottom staff also starts with *f* and *pizz.*. Both staves show rhythmic patterns with accents and dynamic markings of *f* and *p*.

589

(♩ = 88)

con sord.

Two staves of musical notation. The top staff has a handwritten note "3 soli" and a dynamic of *mf*. The bottom staff has a dynamic of *mf* and a "prepare arco!" marking. The music continues with various dynamics and articulations.

595

via sord!

Four staves of musical notation. The top three staves are marked "3 soli" and "con sord. arco". The bottom staff is marked "gli altri (pizz.)". The music features various dynamics and articulations, including *pizz.* and *via sord!*.

601

pizz.

Two staves of musical notation. The top staff has a dynamic of *pp* and a "div. a2 arco" marking. The bottom staff has a dynamic of *pp* and a "pizz." marking. The music includes various dynamics and articulations.

607 Fugue

Two staves of musical notation. The music concludes with a "fine" marking. The notation includes various rhythmic patterns and dynamics.

VIOLONCELLO

4 612 6 620 *unis. arco*
non sord. *p cresc.*

625 *pp cresc.*

632 *pizz.* 2 *(pizz.)*
mp

637 644 *7 unis. arco*
p cresc. *pp*

649 *cresc.* *f cresc. sempre*

656 661 666

VIOLONCELLO

15

Measures 670-675. The score is written for Cello in bass clef. Measure 670 is marked with a box. The music consists of eighth and sixteenth notes with various articulations such as accents, slurs, and dynamic markings like *mf* and *mfz*. The key signature has one flat.

Measures 676-680. The score continues with eighth and sixteenth notes. Measure 676 is marked with a box. The music features slurs and dynamic markings such as *mfz* and *mf*.

Measure 681. This measure is marked with a box and the word *trist.* above the staff. It contains a melodic line with slurs and dynamic markings like *mf* and *mfz*.

Measures 682-684. The score continues with eighth and sixteenth notes. Measure 682 is marked with a box. The music is highly rhythmic with many slurs and dynamic markings such as *mfz* and *mf*.

Measures 685-688. The score continues with eighth and sixteenth notes. Measure 685 is marked with a box. The music concludes with a triplet of eighth notes in the final measure (688), indicated by a '3' above the staff.

VIOLONCELLO

713

3

div. a2
pizz.

719

pp

pizz.

pp

div. a2

one player

724

6

6

730

Rumble
Molto allegro (♩ = 144)

tutti
div. a2 arco

736

marcato

div. a2

740

2

2

746 *div. a2* *sim.* *mp*

753 *div. a2*

759 *div. a2* *cresc.*

763 *4* *769*

776 *una pizz.* *pp* *2*

CUT

VIOLONCELLO

19

783

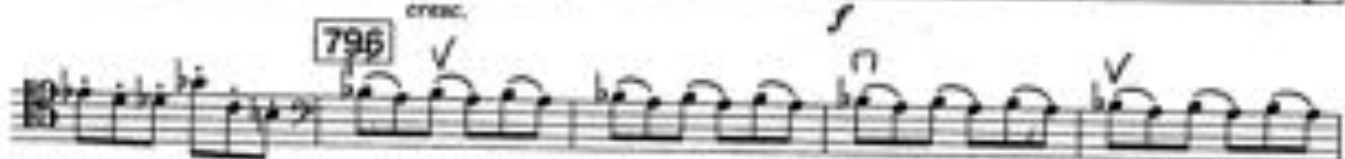


cresc. poco a poco

788



796



801



806

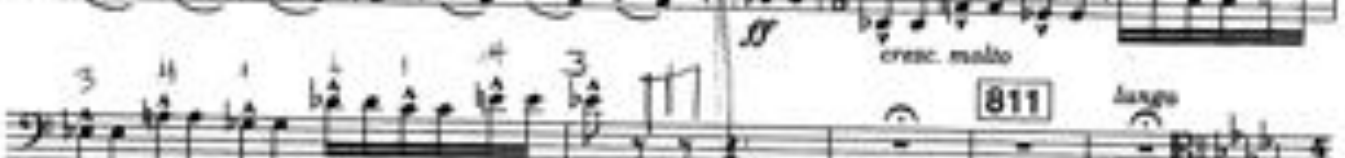


To keep if cut is taken = 811



cresc. molto

811



Adagio

Fine Cadenza

813 Finale 20:10

Adagio (♩ = 80)

in 25000
dir. 24

con sord.

819

BECHTERE: Symphonic Dance

(TIME)

VIOLONCELLO

825

div. a4

831

825

div. a4

831

mp

div. a2

mp

BY STAND

837

Meno (♩ = 72)

837

Meno (♩ = 72)

div. a2 arco

f molto cresc.

arco

pp

pp pizz.

pp

arco

pp

844

844

(arco)

(pizz.)

p

ppp

844

(arco)

(pizz.)

p

ppp

ppp

lungo

pizz.

lungo

lungo

tutti

pizz.

lungo